
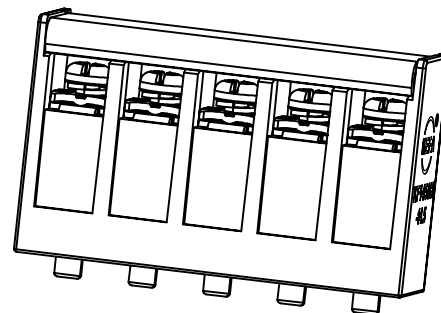
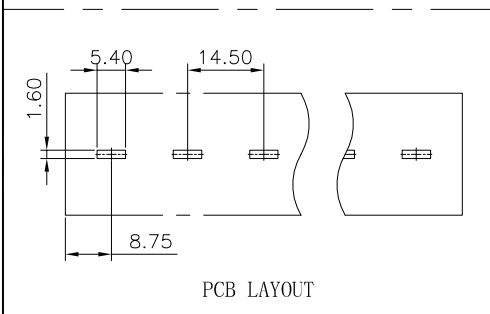
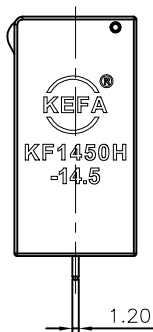
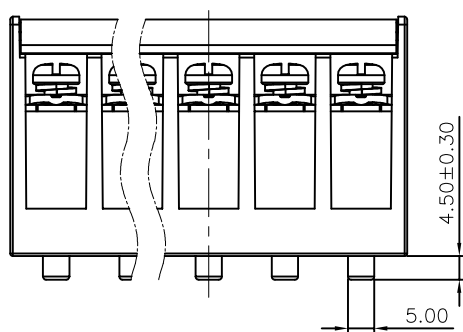
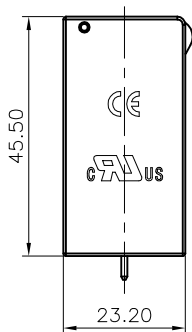
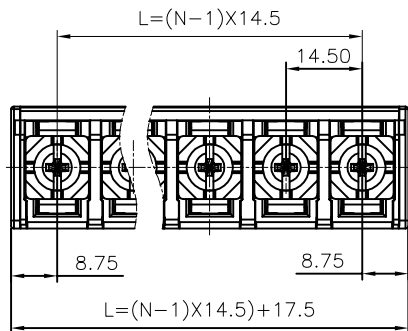


linear dimension(Tolerances Standard GB/T 14486-2008)							— 			
variable range	to 6	over 6 to 10	over 10 to 30	over 30 to 60	over 60 to 100	over 100 to 160	to 10	over 10 to 100	over 100 to 1000	
tolerance	±0.20	±0.30	±0.50	±0.70	±1.00	±1.30	±1.60	0.10	0.30	0.60



REVISION RECORD					
REV.	DESCRIPTION	ECN No.	APPROVED	DATE	

UL/CUL 技术参数					
UL/CUL Technical Data					
等级	Use Group	B	C	D	
额定电压	Rated Voltage [V]	600	600	600	
额定电流	Rated Current [A]	50	50	10	
接线范围	Wire Range	20-8			
单/多芯线	Solid/Stranded [AWG]				
耐电压	Withstanding Voltage	AC 2.2KV/ 1 min			

IEC 技术参数					
IEC Technical Data					
过电压类别	Overtoltage Category	III	III	II	
污染等级	Contamination Class	3	2	2	
额定电压	Rated Voltage [V]	800	1000	1000	
额定电流	Rated Current [A]	76	76	76	
额定冲击电压	Impulse withstand voltage [KV]	6	6	6	
导线截面积	Conductor cross section	0.5-16			
硬质导线	Flexible [mm ²]				
柔性导线	Solid [mm ²]	0.75-16			

材料		
Material		
绝缘材料	Insulation Material	PBT-4830
阻燃等级	Imflamability	UL94V-0
导体材料	Contactior Material	铜合金 Copper alloy
导体表面镀层	Contactive Coating	镀锡 Tin plating

一般参数		
Other Data		
间距	Pitch [mm]	14.5
极数	Poles [P]	2~16P
剥线长度	Stripping Length [mm]	13
螺丝	Screw/扭矩 Torque(Max) [N.m]	M5/2.0
工作温度	Operating temperatur [°C]	-30°C~ +120°C
引针尺寸	Pin Dimensions [mm]	4.5
PCB板孔径	PCB Hole Diameter [mm]	1.6x5.4

DES.	CHK	DATE	2024. 11. 29	单位/UNITS	mm	尺寸/ SIZE	A4	比例/ SCALE	1:1	第三视角/THIRD ANGLE PROJECTION	版本/ REV	A
CHK.	CLF	DATE	2024. 11. 29	 慈溪市科发电子有限公司 CIXI KEFA ELECTRONICS CO., LTD						名称/ TITLE	KF1450H-14.5-XXP黑色	
APP.	HDK	DATE	2024. 11. 29							名称/ TITLE	KF1450H-14.5-XXP黑色	